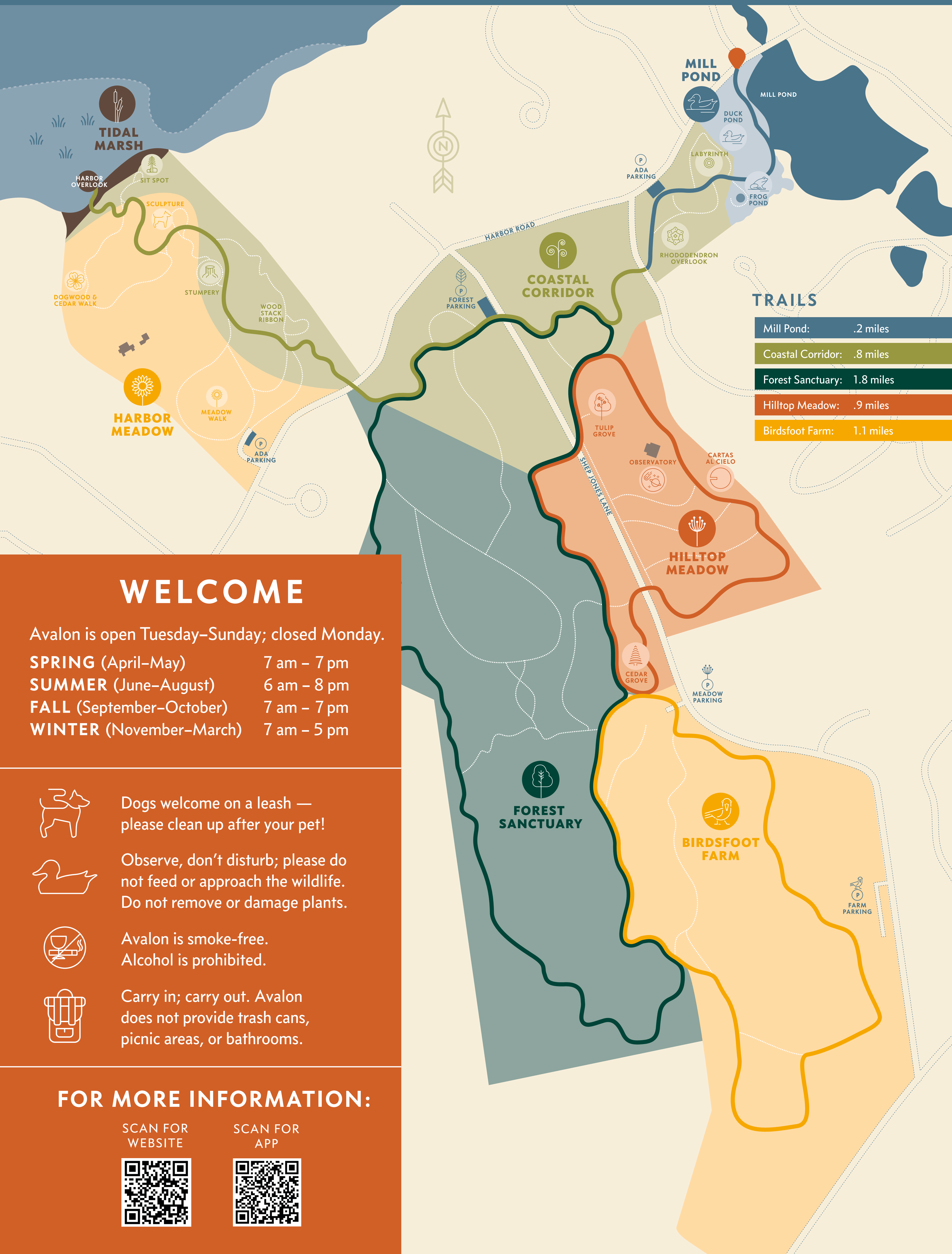




# AVALON

## NATURE PRESERVE



### TRAILS

|                   |           |
|-------------------|-----------|
| Mill Pond:        | .2 miles  |
| Coastal Corridor: | .8 miles  |
| Forest Sanctuary: | 1.8 miles |
| Hilltop Meadow:   | .9 miles  |
| Birdsfoot Farm:   | 1.1 miles |

## WELCOME

Avalon is open Tuesday–Sunday; closed Monday.

|                                 |             |
|---------------------------------|-------------|
| <b>SPRING</b> (April–May)       | 7 am – 7 pm |
| <b>SUMMER</b> (June–August)     | 6 am – 8 pm |
| <b>FALL</b> (September–October) | 7 am – 7 pm |
| <b>WINTER</b> (November–March)  | 7 am – 5 pm |



Dogs welcome on a leash — please clean up after your pet!



Observe, don't disturb; please do not feed or approach the wildlife. Do not remove or damage plants.



Avalon is smoke-free. Alcohol is prohibited.



Carry in; carry out. Avalon does not provide trash cans, picnic areas, or bathrooms.

### FOR MORE INFORMATION:

SCAN FOR WEBSITE



SCAN FOR APP



## PROTECT • RESTORE • INSPIRE

To report problems or for assistance, call the Avalon Rangers at 631-388-3671.

Notice— Avalon is not responsible for injuries or accidents while in the nature preserve.